



Compatibility Chart for Dies and Die Head for MCC Pipe & Bolt Threading Machines

This chart is to provide you a quick answer to choose right item No for Dies and Die Head for the following Machines.

- MCC250 (1" Machine)
- MCC400 (1.1/2" Machine)
- MCC500 (2" Machine)
- MCC800 (3" Machine)

Contents

- | |
|---|
| <p>Page No. 1: How to use this chart</p> <p>Page No. 2: Compatibility chart for regular Dies</p> <p>Page No. 3: Compatibility chart for High Speed Dies(HSS Dies) – for cutting thread on stainless steel pipe</p> <p>Page No. 4: Compatibility chart for Bolt thread Dies (ISO metric & Whitworth)</p> <p>Page No. 5: Compatibility chart for Conduit Pipe thread Dies (straight thread)</p> |
|---|



< How to use this chart >

A I have MCC500 machine and need to purchase a new 1/2" – 3/4" Die set and Die Head(Manual type). What is the Item No for these?

Item No for Dies: PMCKB02

Item No for Die Head: PMDK05

B I have a manual Die Head, color silver and it says "MD80" on size gauge. Which size of dies can be used with, and on which machine?

2.1/2" – 3"(Item No. PMCPT08)

MCC800

or regular steel pipes

issued on April 24, 2017

Dies & Die Head Compatibility Chart for Regular Dies (SKS)



		Machine		Die Head		Dies							
Regular	ID	Die Head (Item No)	BSPT/NPT	Size	Color	Indication Letter	on Size Gauge	MCC250	MCC400	MCC500	MCC800		
MD Manual	HMD10	PMHMD10	BSPT	1/4"-3/8"	Red	10	MD10	PMHCPT01	1/4"-3/8"				
			NPT	1/4"-3/8"	Red	10	MD10	PMHCNP01	1/4"-3/8"				
	MDK	PMDK05	BSPT	1/4"-2"	Red	K	TYPE K		PMCKB01	1/4"-3/8"	PMCKB01	1/4"-3/8"	
			NPT	1/4"-2"	Red	K	TYPE K		PMCKB02	1/2"-3/4"	PMCKB02	1/2"-3/4"	
			NPT	1/4"-2"	Red	K	TYPE K		PMCKB05	1"-2"	PMCKB05	1"-2"	
MD80	PMDM108 PMDMP08	BSPT	2 1/2"-3"	Silver	80	MD80					PMCKN01	1/4"-3/8"	
		NPT	2 1/2"-3"	Silver	80	NPT						PMCKN02	1/2"-3/4"
AD Self-Opening	HAD25N	PMHAD11	BSPT	1/2"-1"	Silver	25	AD25	PMHCPT02	1/2"-3/4"				
			NPT	1/2"-1"	Silver	25	AD25	PMHCNP02	1/2"-3/4"				
	AD20	PMDAD02	BSPT	1/2"-3/4"	Silver	20	AD20	PMHCNP03	1"				
			NPT	1/2"-3/4"	Silver	20	AD20						
	AD40	PMDAD04	BSPT	1"-1 1/2"	Silver	40	AD40			PMCP02	1/2"-3/4"	PMCP02	1/2"-3/4"
	AD50	PMDAD05	BSPT	1"-2"	Silver	50	AD50			PMCP04	1-1 1/2"	PMCP04	1-1 1/2"
	AD80	PMDAD08	BSPT	2 1/2"-3"	Silver	80	AD80			PMCP05	1"-2"	PMCP05	1"-2"
												PMCP08	2 1/2"-3"
												PMCP08	2 1/2"-3"

For regular steel pipes

issued on April 24, 2017

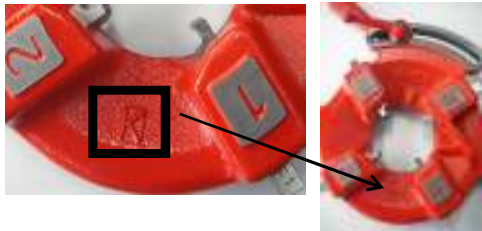
Dies & Die Head Compatibility Chart for Regular Dies (SKS)

Machine	Die Head	Dies
---------	----------	------

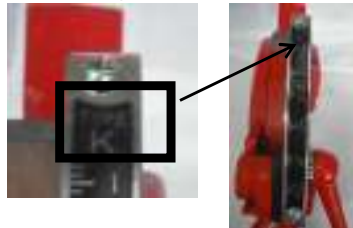
Regular	ID	Die Head (Item No)	BSPT/NPT	Size	Color	Indication Letter	on Size Gauge	MCC250		MCC400		MCC500		MCC800	
MD Manual 	HMD10	PMHMD10	BSPT	1/4"-3/8"	Red	10	MD10	PMHCPT01	1/4"-3/8"						
			NPT	1/4"-3/8"	Red	10	MD10	PMHCNP01	1/4"-3/8"						
	MDK	PMDK05	BSPT	1/4"-2"	Red	K	TYPE K			PMCKB01	1/4"-3/8"	PMCKB01	1/4"-3/8"	PMCKB01	1/4"-3/8"
			NPT	1/4"-2"	Red	K	TYPE K			PMCKB02	1/2"-3/4"	PMCKB02	1/2"-3/4"	PMCKB02	1/2"-3/4"
										PMCKB05	1"-2"	PMCKB05	1"-2"	PMCKB05	1"-2"
										PMCKN01	1/4"-3/8"	PMCKN01	1/4"-3/8"	PMCKN01	1/4"-3/8"
									PMCKN02	1/2"-3/4"	PMCKN02	1/2"-3/4"	PMCKN02	1/2"-3/4"	
									PMCKN05	1"-2"	PMCKN05	1"-2"	PMCKN05	1"-2"	
	MD80	PMDM108	BSPT	2 1/2"-3"	Silver	80	MD80							PMCP08	2 1/2"-3"
		PMDNP08	NPT	2 1/2"-3"	Silver	80	NPT							PMCP08	2 1/2"-3"
AD Self-Opening 	HAD25N	PMHAD11	BSPT	1/2"-1"	Silver	25	AD25	PMHCPT02	1/2"-3/4"						
			NPT	1/2"-1"	Silver	25	AD25	PMHCPT03	1"						
										PMHCNP02	1/2"-3/4"				
										PMHCNP03	1"				
	AD20	PMDAD02	BSPT	1/2"-3/4"	Silver	20	AD20			PMCP02	1/2"-3/4"	PMCP02	1/2"-3/4"	PMCP02	1/2"-3/4"
	AD40	PMDAD04	BSPT	1"-1 1/2"	Silver	40	AD40			PMCP04	1-1 1/2"				
AD50	PMDAD05	BSPT	1"-2"	Silver	50	AD50					PMCP51AK	1"-2"	PMCP51AK	1"-2"	
AD80	PMDAD08	BSPT	2 1/2"-3"	Silver	80	AD80							PMCP08	2 1/2"-3"	

*** Discontinued Item

Indication Letter



on Size Gauge





High Speed Die(SKH) designed for Stainless Steel Pipe

issued on April 24, 2017

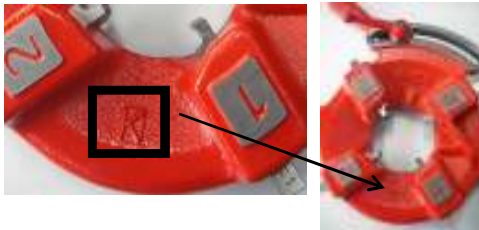
Dies & Die Head Compatibility Chart for High Speed (HSS-SKH) Dies

Machine Die Head Dies

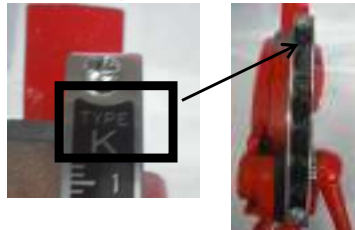
HSS(SKH)	ID	Die Head (Item No)	BSPT/NPT	Size	Color	Indication Letter	on Size Gauge	MCC250		MCC400		MCC500		MCC800		
MD Manual 	HMD10	PMHMD10	BSPT	1/4"-3/8"	RED	10	MD10	PSHCPT01	1/4"-3/8"							
			NPT	1/4"-3/8"	RED	10	MD10									
	MDK	PMDK05	BSPT	1/4"-2"	RED	K	TYPE K			PSCKB01	1/4"-3/8"	PSCKB01	1/4"-3/8"	PSCKB01	1/4"-3/8"	
			NPT	1/4"-2"	RED	K	TYPE K				PSCKB02	1/2"-3/4"	PSCKB02	1/2"-3/4"	PSCKB02	1/2"-3/4"
									PSCKB05	1"-2"	PSCKB05	1"-2"	PSCKB05	1"-2"		
											PSCKN02	1/2"-3/4"	PSCKN02	1/2"-3/4"	PSCKN02	1/2"-3/4"
											PSCKN05	1"-2"	PSCKN05	1"-2"	PSCKN05	1"-2"
AD Self-Opening 	MD80	PMDM108	BSPT	2 1/2"-3"	SILVER	80	MD80							PSCG008	2 1/2"-3"	
		PMDNP08	NPT	2 1/2"-3"	SILVER	80	NPT									
	HAD25N	PMHAD11	BSPT	1/2"-1"	SILVER	25	AD25	PSHCPT02	1/2"-3/4"							
			NPT	1/2"-1"	SILVER	25	AD25	PSHCPT03	1"							
	AD20	PMDAD02	BSPT	1/2"-3/4"	SILVER	20	AD20			PSCG002	1/2"-3/4"	PSCG002	1/2"-3/4"	PSCG002	1/2"-3/4"	
	AD40	PMDAD04	BSPT	1"-1 1/2"	SILVER	40	AD40			PSCG004	1-1 1/2"					
	AD50	PMDAD05	BSPT	1"-2"	SILVER	50	AD50					PSCG051AK	1"-2"	PSCG051AK	1"-2"	
	AD80	PMDAD08	BSPT	2 1/2"-3"	SILVER	80	AD80							PSCG008	2 1/2"-3"	

*** Discontinued Item

Indication Letter



on Size Gauge



For bolt

issued on April 24, 2017

Dies & Die Head Compatibility Chart for bolt thread

Machine	Die Head	Dies
---------	----------	------

Bolt	ID	Die Head (Item No)	Size	Right/Left	Color	MCC250		MCC400		MCC500		MCC800	
Manual	MDD	PMDB002	W3/8"-3/4"	Right	red			PMCRW03	W3/8" R	PMCRW03	W3/8" R	PMCRW03	W3/8" R
								PMCRW04	W1/2" R	PMCRW04	W1/2" R	PMCRW04	W1/2" R
								PMCRW05	W5/8" R	PMCRW05	W5/8" R	PMCRW05	W5/8" R
								PMCRW06	W3/4" R	PMCRW06	W3/4" R	PMCRW06	W3/4" R
	MD40	PMDM104	W7/8"-1.1/4"	Right	red			PMCRW07	W7/8" R	PMCRW07	W7/8" R	PMCRW07	W7/8" R
								PMCRW08	W1" R	PMCRW08	W1" R	PMCRW08	W1" R
								PMCRW10	W1.1/4" R	PMCRW10	W1.1/4" R	PMCRW10	W1.1/4" R
	MDD	PMDDM20	M8 - M20	Right	red			PMCRM08	M8 R	PMCRM08	M8 R	PMCRM08	M8 R
								PMCRM10	M10 R	PMCRM10	M10 R	PMCRM10	M10 R
								PMCRM12	M12 R	PMCRM12	M12 R	PMCRM12	M12 R
								PMCRM14	M14 R	PMCRM14	M14 R	PMCRM14	M14 R
								PMCRM16	M16 R	PMCRM16	M16 R	PMCRM16	M16 R
								PMCRM18	M18 R	PMCRM18	M18 R	PMCRM18	M18 R
	MD40	PMDAM30	M22 - M30	Right	red			PMCRM20	M20 R	PMCRM20	M20 R	PMCRM20	M20 R
								PMCRM22	M22 R	PMCRM22	M22 R	PMCRM22	M22 R
								PMCRM24	M24 R	PMCRM24	M24 R	PMCRM24	M24 R
							PMCRM30	M30 R	PMCRM30	M30 R	PMCRM30	M30 R	

For conduit Pipe

issued on April 24, 2017

Dies & Die Head Compatibility Chart for Conduit Pipe(Straight thread, not taper)

Machine	Die Head	Dies
---------	----------	------

Conduit	ID	Die Head (Item No)	Wall	Size	Color	MCC250		MCC400		MCC500		MCC800	
Manual	MDC1	PMDCC75	Thin wall	C15 - 75	red					PMCC015	C15	PMCC015	C15
										PMCC025	C19 - 25	PMCC025	C19 - 25
										PMCC051	C31 - 51	PMCC051	C31 - 51
												PMCC075	C63 - 75
	MDC1	PMDCF08	Thick wall	PF1/2"-3" (G16-82)	red					PMCPF02	PF1/2"-3/4"(G16-22)	PMCPF02	PF1/2"-3/4"(G16-22)
										PMCPF03	PF1"-1.1/4"(G28-36)	PMCPF03	PF1"-1.1/4"(G28-36)
										PMCPF05	PF1.1/2"-2"(G42-54)	PMCPF05	PF1.1/2"-2"(G42-54)
												PMCPF08	PF2.1/2"-3"(G70-82)